

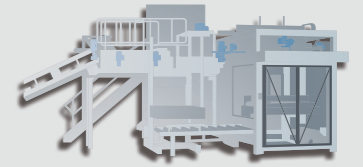


PNEUMATICS | 气动

HYDRAULICS | 液压

MECHATRONICS | 机电一体化

ENVIRONMENTAL TECHNOLOGY | 环保技术



Supporting your success

"Supporting Your Success" is our motto and sums up our ambition in a nutshell: We want to make our customers more successful so that together we can achieve profitable growth and and profit as suppliers. We do not compete with our customers. On the contrary, we help them improve their competitiveness. We achieve this by means of more efficient solutions, higher-quality products, better consultation quality, comprehensive service and absolute loyalty.

助力成功

"助力成功"乃企业信条，凝练我们宏旨所在：赋能客户卓越成长，携手缔造共赢格局，成就可持续价值伙伴。我们绝不与客户争竞，而致力锻造其竞争力跃升之翼。藉由五大支柱实现此志：精进高效方案 · 淬炼优质产品 · 升维咨询服务 · 贯通全链服务 · 恪守信诺伙伴精神。

Our core competences

We deliver technical products and systems throughout Asia that make our customers better, more efficient and more successful. As a distributor, we are a reliable link between first-class manufacturers of industrial components and demanding customers. As a solution provider, we are the top manufacturer of special products and complete assemblies for industry. As a service provider, we offer pronounced expertise in the service, maintenance and repair of our products, assemblies and systems.

我们的核心竞争力

我们横跨欧亚大陆交付技术产品与系统，持续赋能客户提升效能、优化运营、制胜未来。身为分销枢纽，我们缔结顶尖工业部件制造商与严苛客户间的可靠纽带；作为方案智造者，我们专注工业领域特种设备与完整装配体的尖端制造；立足服务基石，我们在产品、组件及系统的维护维保领域提供深度专业服务。

Our Products and Brands | 我们的产品和品牌

BIBUS Holding BIBUS 控股		03
Technology Group 科技集团		05
Systems and assemblies 系统和组件		07
VJ X-ray generator 伟杰 X 射线线源		08
X-ray Detector X 射线探测器		09
Motor 电机		10
XRF Detector 荧光探测器		11
Indexer&Rotary Tables 分度器 & 转台		12
Electric Wheels 电动轮		13
Linear Motion 直线运动		14
Safety chucks 安全卡盘		15

Gas spring 气弹簧		16
Every aspect of power transmission 动力传动技术		17
SUCO pressure switches SUCO 压力开关		18
High speed in pneumatics 高速阀		19
Special pneumatic motors 特殊气动马达		20
Pneumatic rotary actuators 气动旋转执行器		21
Specialist for damping technology 减震技术专家		22
Vacuum Technology 真空技术		23
Danfoss Hydrostatic 丹佛斯液压		24
FPZ Blower FPZ 鼓风机		25



The customer-centered in-house sales support and a wide stock guarantees fast order processing. We are ideally equipped for development and production as well as for packaging of special components.

以顾客为中心的內部銷售支持，以及寬敞有序的庫存倉儲，保證訂單的快速處理。我們非常擅長於特殊產品的開發，生產和打包定制服務。

Network of expertise – partners for technology, materials and electronics

We are a leading company in our core business areas and provide our customers with high quality products and services.

BIBUS is a family owned Swiss company founded in 1947. Today, BIBUS operates in over 32 countries with more than 1000 employees in Europe and Asia.

The key to our success is the network of expertise and skills of our employees.

技术、原材料、电子业务的专业网络化合作者

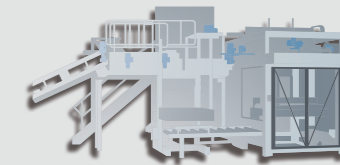
专业技能网络化——技术、原材料与电子业务的合作伙伴

我们是核心业务领域的龙头企业，为我们的客户提供高品质的产品和服务。

BIBUS是一家企业，于1947年创立于瑞士，业务遍及超过32个国家，拥有超过1000位雇员。

我们成功的关键是雇员的专业与技能网络化。

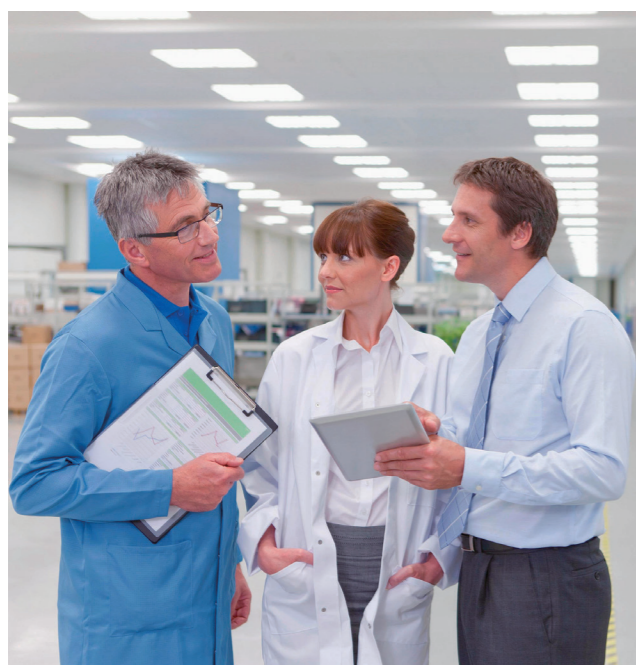




Engineering - Logistics - Services

70 years of experience in the fields of hydraulics, pneumatics, environmental technologies, motion technologies, mechanical components and systems.

Core competencies in the development and manufacture of assemblies, hydraulic systems and units as well as in the development and packaging of special components.



工程——物流——服务

我们在液压，气动，环保技术，运动技术，机电部件和系统集成领域有70年的经验积累。

我们在技术研发、装配制造、液压系统和元器件供应以及打包定制方面均深具核心竞争力。

Mechatronics

A complete line of mechatronic components, incl. controllers, drives, motors, sensors, clutches, breaks, gears and linear actuators. Our range is further completed with industrial gas springs, switch technology, safety engineering and aluminium profile systems.

Pneumatics

An extensive pneumatic product line to meet applications in every sector of the market. From semiconductor to automotive, medical to textile, our products are designed to fit your unique requirements.

Hydraulics

Hydraulics by BIBUS offers an extensive hydraulic and electro-hydraulic product line, engineered to meet applications as well in the mobile as in the industrial sector. Our local subsidiaries, European wide, assure you best engineering expertise and most rapid deliveries.

Environmental Technology

With our environmental technology we market a comprehensive range of air pumps, diaphragm blowers, side channel blowers, air diffusers, submersible pumps and double diaphragm pumps.



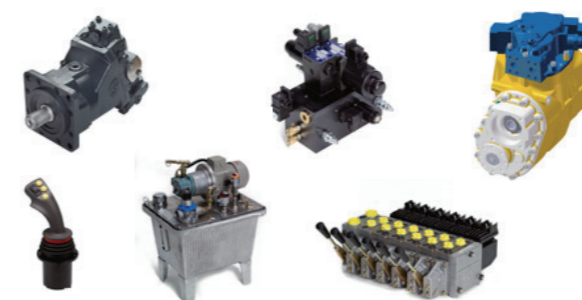
机电一体化

机电一体化组件的完整产品线包括：控制器，驱动器，电机，传感器，离合器，联轴器，齿轮和线性驱动器。我们还拥有工业用气弹簧，开关技术，安全工程和铝型材系统等极为丰富的产品线。



气动系列

我们丰富的气动产品系列，全方位满足市场需求。从半导体到自动化，医疗到纺织，我们的产品设计，完全满足您的个性要求。



液压系列

BIBUS 的液压部门提供通用液压和电动液压产品，满足汽车与工业领域的应用需求。我们遍及欧洲的子公司，确保为您提供最优秀的工程专业技术与最快捷的当地交付服务。



环保技术

基于我们的环保技术，我们的气动泵、隔膜泵、鼓风机、侧槽风机、空气扩散器、潜水泵、双隔膜泵产品在市场上得到广泛应用。

Systems and assemblies

From the prototype to series production - as well as in the development and assembly of easy assemblies and complete systems for stationary and mobile applications. We provide the right solutions and overtake planning, design, commissioning, assembly and testing.

系统和组件

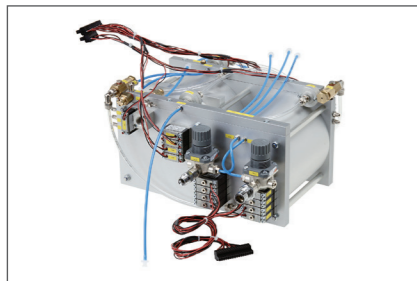
从样品到批量生产，以及从固定式和移动式的一般组件到完整系统的研发和装配方面，我们提供正确的解决方案，并包含计划、设计、组装和测试。

VJ X-ray generator

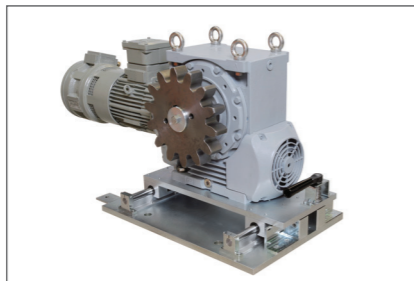
VJ X-ray generator excel in sorting applications. Utilizing high-precision X-ray imaging technology, they rapidly identify internal structures and composition differences in materials. Widely used in mineral, recycling, and food sorting, they significantly enhance sorting accuracy and efficiency, enabling automated intelligent sorting while ensuring product quality and resource recovery rates.

伟杰 X 光射线源

美国伟杰（VJ Technologies）射线源在分选领域应用卓越，其高精度 X 射线成像技术可快速识别材料内部结构与成分差异，广泛用于矿石、再生资源及食品分选，有效提升分选精度与效率，实现自动化智能分选，保障产品质量与资源回收率。



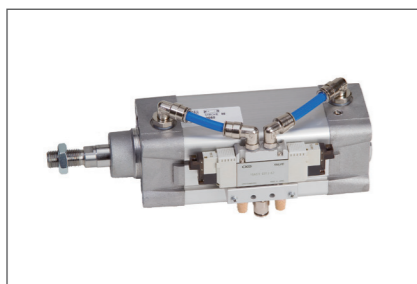
► Medical devices
医疗装置



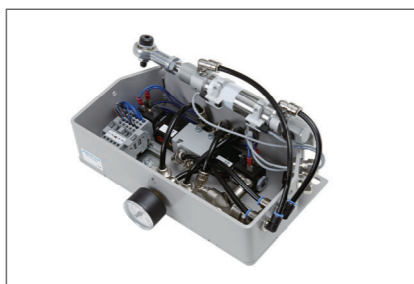
► Motor units
马达组件



► Pneumatic air treatment devices
气动空气处理装置



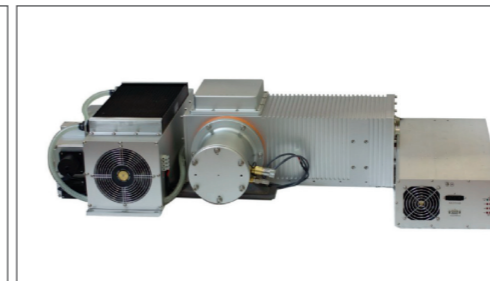
► Cylinder units
气缸组件



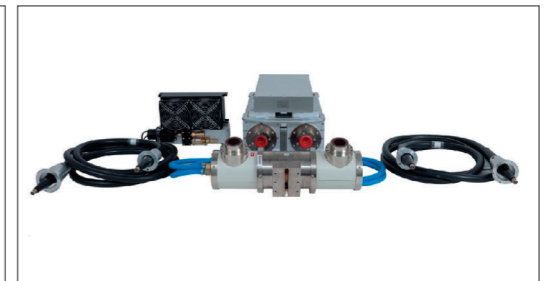
► Pneumatic flap control
气动控制装置



► Air-cool X-ray Generator
风冷射线源



► Metal-ceramic X-ray Tube Generator
金属陶瓷管射线源



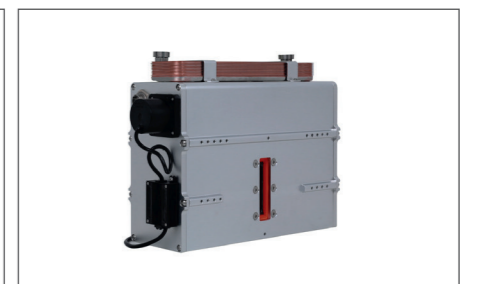
► Split X-ray Generator
分体射线源



► Cone-beam X-ray Generator
锥束射线源



► Fan-beam X-ray Generator
扇束射线源



► Water-cool X-ray Generator
水冷射线源

X-ray Detector

The digital X-ray detector system is a highperformance linear array X-ray detection solution specifically developed for high-speed X-ray inspection. With features such as high performance (high speed/ low noise), low cost, high reliability, and support for stable connectivity in large-volume systems, it effectively helps customers enhance the competitiveness of their end products.

X 射线探测器

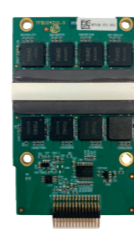
数字 X 射线探测器系统是专为高速 X 射线检测开发的高性能线阵 X 射线探测系统。其高性能(高速/低噪声)、低成本、高可靠性、支持大体积系统可靠连接等特点,可以有效帮助客户提高终端产品竞争力。



► FUXI



► PANGU



► PANGU-GA



► PANGU-GS



► PANGU-SE



► Linear array module
线阵模块

Motor

As a specialized partner in drive system components, we offer a comprehensive range of product solutions—from frequency converters and three-phase motors to couplings—supported by a large domestic storage center.

电机

作为传动系统组件的专业合作伙伴,我们为您提供从变频器、三相电机到联轴器的全系列产品解决方案,并在国内设有大型仓储中心。



► IEC Hazardous Area Motors
IEC 危险区域电机



► Low Voltage IEC Motors
低压 IEC 电机



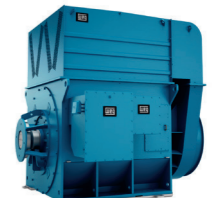
► Low Voltage NEMA Motors
低压 NEMA 电机



► Medium and High Voltage Induction Motors
中高压感应电机



► Special Application Motors
特殊应用电机



► Synchronous Motors
同步电机

XRF Detector

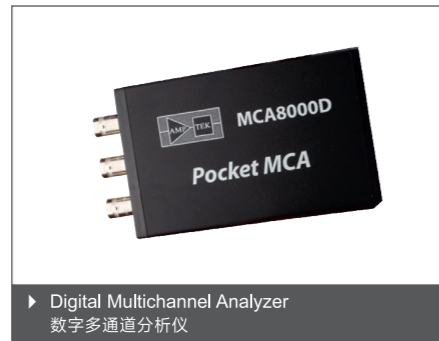
The XRF detector is the core component of an X-ray fluorescence analyzer. It is responsible for receiving characteristic X-rays emitted by the excited sample and converting them into electrical signals. By measuring the intensity and energy of these signals, the analyzer can accurately determine the elemental composition and content of the sample. Modern detectors offer high resolution, high counting rates, and excellent energy linearity, ensuring analytical accuracy and efficiency. They are widely used in fields such as geology, environmental protection, metallurgy, and materials science.

荧光探测器

XRF 探测器是 X 射线荧光分析仪的核心部件，负责接收样品受激后发出的特征 X 射线，并将其转换为电信号。通过测量这些信号的强度与能量，分析仪可精确鉴定样品中的元素组成与含量。现代探测器具有高分辨率、高计数率和良好能量线性等特点，确保了分析的准确性与效率，广泛应用于地质、环保、冶金及材料科学等领域。



► Detector
探测器



► Digital Multichannel Analyzer
数字多通道分析仪



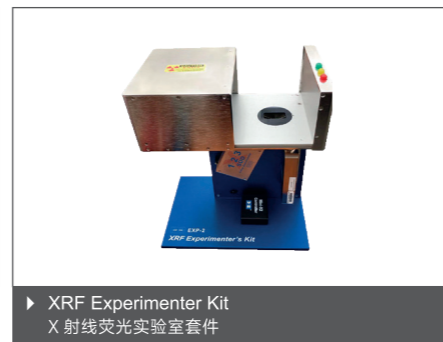
► OEM Solutions
OEM 解决方案



► X123 Fast SDD
Fast SDD 系列



► X-ray generator
XRF 射线源



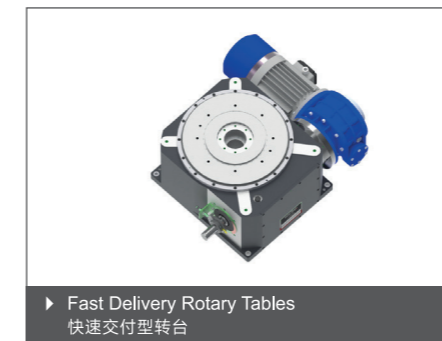
► XRF Experimenter Kit
X 射线荧光实验室套件

Indexer&Rotary Tables

The rotary tables are mechanical units with orthogonal axes, where the continuous rotation of the input shaft results in the conversion into an intermittent rotation of the output disc. This is accomplished by mounting the cam to the input shaft and then an indexing disc holding the cam follower integrated with the output disc. The profile of the cam and number of cam follower bearings applied determine the type of index movement that occurs.

分度器 & 转台

转台是带有正交轴的机械装置，输入轴的连续旋转可转换为输出盘的间歇性旋转。该功能通过将凸轮安装在输入轴上实现，而装有凸轮从动件的分度盘则与输出盘集成联动。凸轮的轮廓及其所配置的凸轮从动轴承数量，共同决定了分度运动的最终类型。



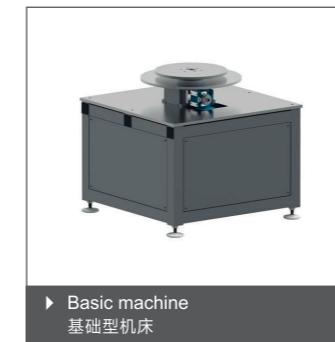
► Fast Delivery Rotary Tables
快速交付型转台



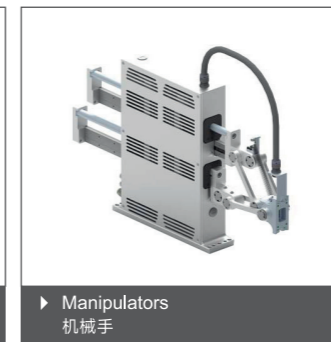
► Intermitters&Oscillators
间歇运动器 & 摆动器



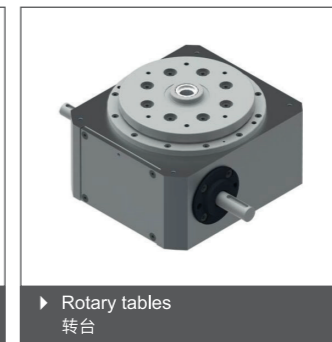
► Torque Index Table
扭矩分度转台



► Basic machine
基础型机床



► Manipulators
机械手



► Rotary tables
转台



► Rotating Ring
旋转环

Electric wheel integrating motor and batteries

The technology proposed by EZ-Wheel is the fastest, simplest and most advanced solution offering electric traction to mobile materials in all industries, including but not limited to medical environment, food industry, and heavy load handling.

集成马达和电池的电动轮

EZ-Wheel 电动轮为所有工业需求的电动运输领域提供最快捷、简单、先进的解决方案。包括但不限于医药应用，食品工业和重载处理领域。



► Series 300 for indoor
室内用 300 系列产品



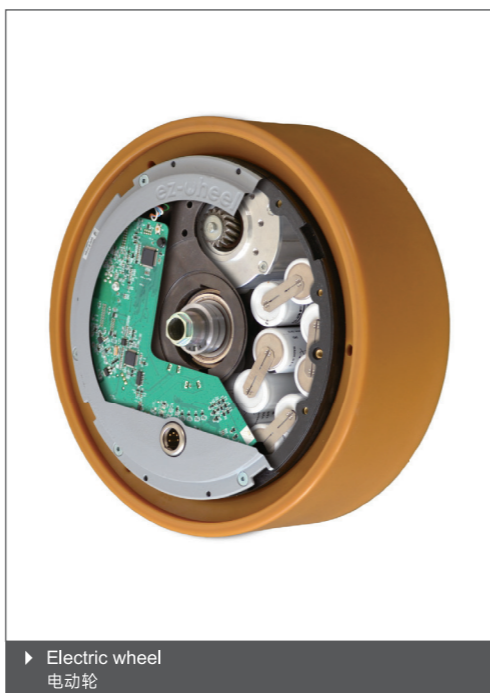
► Series 160 in compact applications
紧凑型 160 系列



► Series 10" for outdoor
室外用 10" 系列



► Accessoires
附件



► Electric wheel
电动轮

Linear motion technology

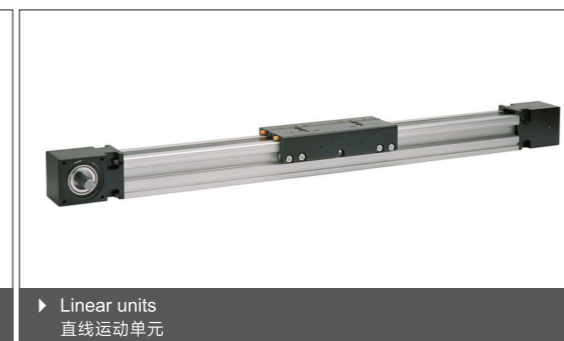
Thomson is the best positioned to provide the optimal linear motion solution for your application. The range covers the smallest and most compact linear motion systems to the biggest and most robust. Our wide range of guide and drive systems can be configured economically and can also work in harsh environments, at high speeds, and in high precision applications.

直线运动技术

Thomson 是您在直线运动应用方面的最佳解决方案。其应用范围广泛，覆盖从微小规格到大型重载的直线运动系统。我们丰富的驱动方案，能够满足客户的经济配置，并且能够适应恶劣工作环境与高速、高精度的应用要求。



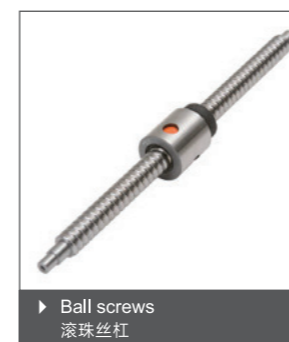
► Linear actuators
电动执行器



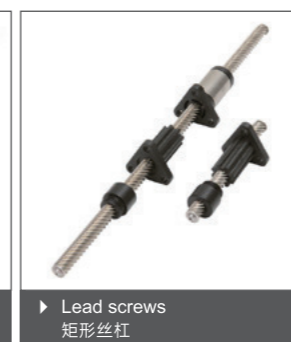
► Linear units
直线运动单元



► Lifting columns
升降柱



► Ball screws
滚珠丝杠



► Lead screws
矩形丝杠



► Linear bearings and guides
圆轨和方轨



► Planetary gear heads
行星减速机

Safety chucks

BOSCHERT safety chucks provide security by winding and unwinding applications. For each application BOSCHERT safety chucks represent an extremely economical and easy solution for the clamping of expansion shafts.

安全卡盘

BOSCHERT 安全卡盘提供收卷和放卷的安全应用，易于实现快速、简便的涨紧轴装卸操作。



Gas spring

Bansbach products are entirely manufactured using high-quality, environmentally friendly materials. Consistent high quality is ensured through continuous monitoring of raw materials during the manufacturing process, implementation of testing protocols, and quality control. For repeat orders, modern manufacturing techniques allow for precise replication of products.

气弹簧

Bansbach 产品完全采用优质环保材料制造。通过在制造过程中持续监控原材料、执行测试计划和监控质量，可以保证始终如一的高质量。对于重复订单，可以使用现代制造工艺精确地复制产品。



Every aspect of power transmission

The brand RINGFEDER is world's leading in the sector of locking devices and damping technology. The GERWAH brand stands for torsionally rigid, elastic couplings as well as safety couplings in the lower torque range.

动力传动技术

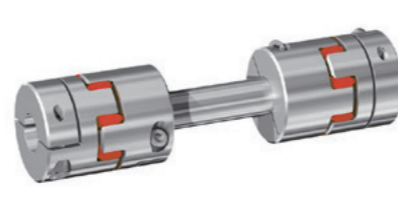
RINGFEDER 品牌是上涨紧锁定装置和减震技术领域的佼佼者。GERWAH 品牌的定位是钢膜片连接，弹性连接以及低扭矩安全联轴器的应用。而 TSCHAN 则在高速重载恶劣工况条件下，具有独特优势。



► Metal bellows couplings
金属波纹管联轴器



► Elastomer couplings
梅花型弹性联轴器



► Line shafts
线型联轴器



► Magnetic couplings
磁性联轴器



► Friction springs
摩擦弹簧



► Special couplings
特殊联轴器



► Locking assembly
涨紧套

SUCO pressure switches

SUCO pressure switches employ precision sensing technology and robust construction, delivering stable and reliable performance. Available in both mechanical and electronic types, they feature accurate set points, high repeatability, and rapid response, ensuring precise pressure control in hydraulic and pneumatic systems. Renowned for exceptional quality, high safety, and long service life, these switches are widely used in industrial automation, engineering machinery, and process control applications, making them an ideal choice for ensuring equipment safety.

SUCO 压力开关

SUCO 压力开关采用精密传感技术与坚固结构，性能稳定可靠。其提供机械式与电子式多种类型，设定点精确，重复性高，响应迅速，能精准控制液压与气动系统的压力范围。产品以其卓越的品质、高安全性和长寿命，广泛应用于工业自动化、工程机械及过程控制领域，是设备安全运行的理想之选。



► Electronic Pressure Sensor
电子式压力传感器



► Electronic Pressure Switch
电子压力开关



► Mechanical Pressure Switch
机械式压力开关



► Mechanical Pressure Transmitter
机械式压力变送器

High speed in pneumatics

In the application and development of pneumatic techniques, Matrix products represent the most advanced and the most innovative choice. Solenoid valves, vacuum solenoid valves, pressure regulators, electronic controllers as well as special products.

高速阀

在气动技术的应用与发展领域，Matrix 产品代表最先进、最具革新理念的选择。从电磁阀、真空电磁阀、压力调节阀、电子控制器到特殊产品。

MATRIX



Special pneumatic motors

PTM radial piston motors are perfect for high torque low speed applications. The motors are easy to control and energy saving.

The air operated stepper motor from Baumgartner is a unique drive with a maximum of precision.

特殊气动马达

PTM 径向柱塞气动马达是高扭矩、低转速应用的完美选择。该马达易于控制且经济节能。

Baumgartner 气动步进马达，兼具独特驱动与高精度度。

PTM

Baumgartner
Maschinenbau AG | alles ist möglich



Pneumatic rotary actuators

PTM equipment consists mainly of pneumatically driven rotary actuators and tilting modules, gripping modules, tilting-gripping modules, linear units and special plant for handling and automation. A particular characteristic of P. T. M. products is their small, light construction relative to their high output and long life.

气动旋转执行器

PTM 主要包括气动旋转装置和倾斜模块、夹爪模块、倾斜夹爪组合模块和线性单元和手动及自动化特种装置。PTM 兼具小巧轻便的结构与高输出、耐久性的优势。



Specialist for damping technology

ACE is the leading specialist in the area of industrial damping technology. Well known in the linear deceleration market with industrial shock absorbers but also for many other complementary products developed which assist in absorbing shock, controlling speeds, or even lifting loads.

减震技术专家

减震技术专家 ACE 是工业减震技术领域的领导者。其以工业油压减震器享誉直线减速市场，而其独特的吸收减震、控制速度以及提升负载的各类产品亦性能卓越。



Vacuum Technology

Made of high-performance elastic material, it offers excellent sealing and wear resistance. Designed for automated handling, it is suitable for various surfaces such as glass, metal, and plastic. With a lightweight structure and rapid response, it delivers stable high suction force, significantly enhancing production efficiency and operational reliability, making it an ideal choice for industrial automation.

真空技术

采用高性能弹性材料制成，具备卓越的密封性与耐磨性。专为自动化搬运设计，适用于玻璃、金属、塑料等多种表面。结构轻巧，响应迅速，提供稳定高吸力，大幅提升生产效率与操作可靠性，是工业自动化领域的理想选择。



Danfoss Hydrostatic

Danfoss Power Solutions is a global leader in hydraulic technology, specializing in mobile hydraulics and hydrostatic transmission solutions. Its high-performance pumps, motors, intelligent PVG multi-control valves, and electronic control systems are widely used in construction machinery, agricultural equipment, and off-highway vehicles. Renowned for innovation, reliability, and energy efficiency, Danfoss leverages advanced intelligent control platforms like Plus+1® to help OEMs enhance equipment performance, productivity, and automation, driving the industry toward an electrified and digital future.

丹佛斯液压

丹佛斯动力系统是全球液压技术领域的领导者，专注于移动液压和静液压传动解决方案。其高性能的泵、马达、智能 PVG 多路阀和电控系统广泛应用于工程机械、农业机械及非公路车辆。丹佛斯以创新、可靠和高能效著称，通过先进的 Plus+1® 等智能控制平台，助力原始设备制造商提升设备性能、生产力和自动化水平，推动行业向电气化与数字化未来转型。

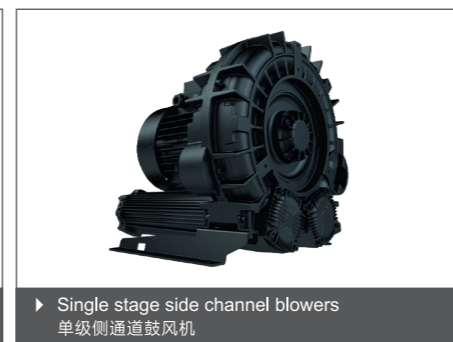
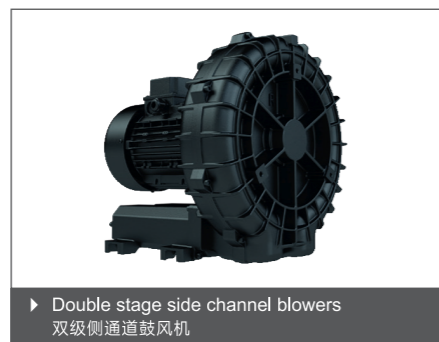
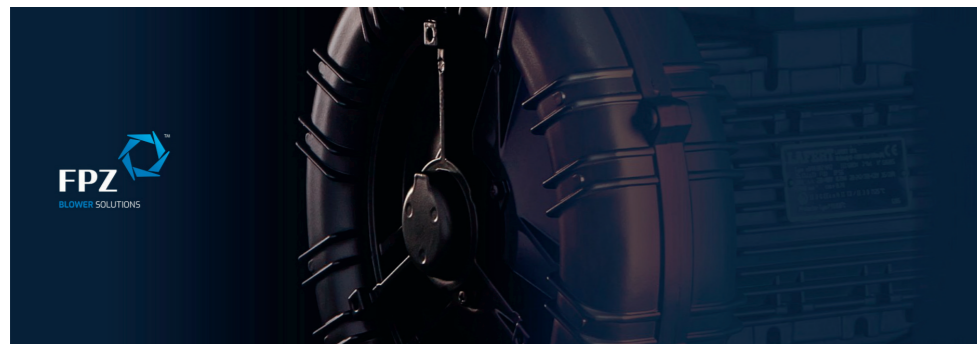


FPZ Blower

The Italian FPZ high-temperature blower is engineered for demanding industrial environments. It utilizes special heat-resistant materials and unique cooling technology to ensure stable operation under sustained high temperatures. With a robust structure and exceptional efficiency, it is widely used in drying equipment, industrial kiln exhaust gas treatment, and hot air circulation systems. This blower guarantees highly efficient and reliable processes, making it a top-tier solution for handling high-temperature media.

FPZ 鼓风机

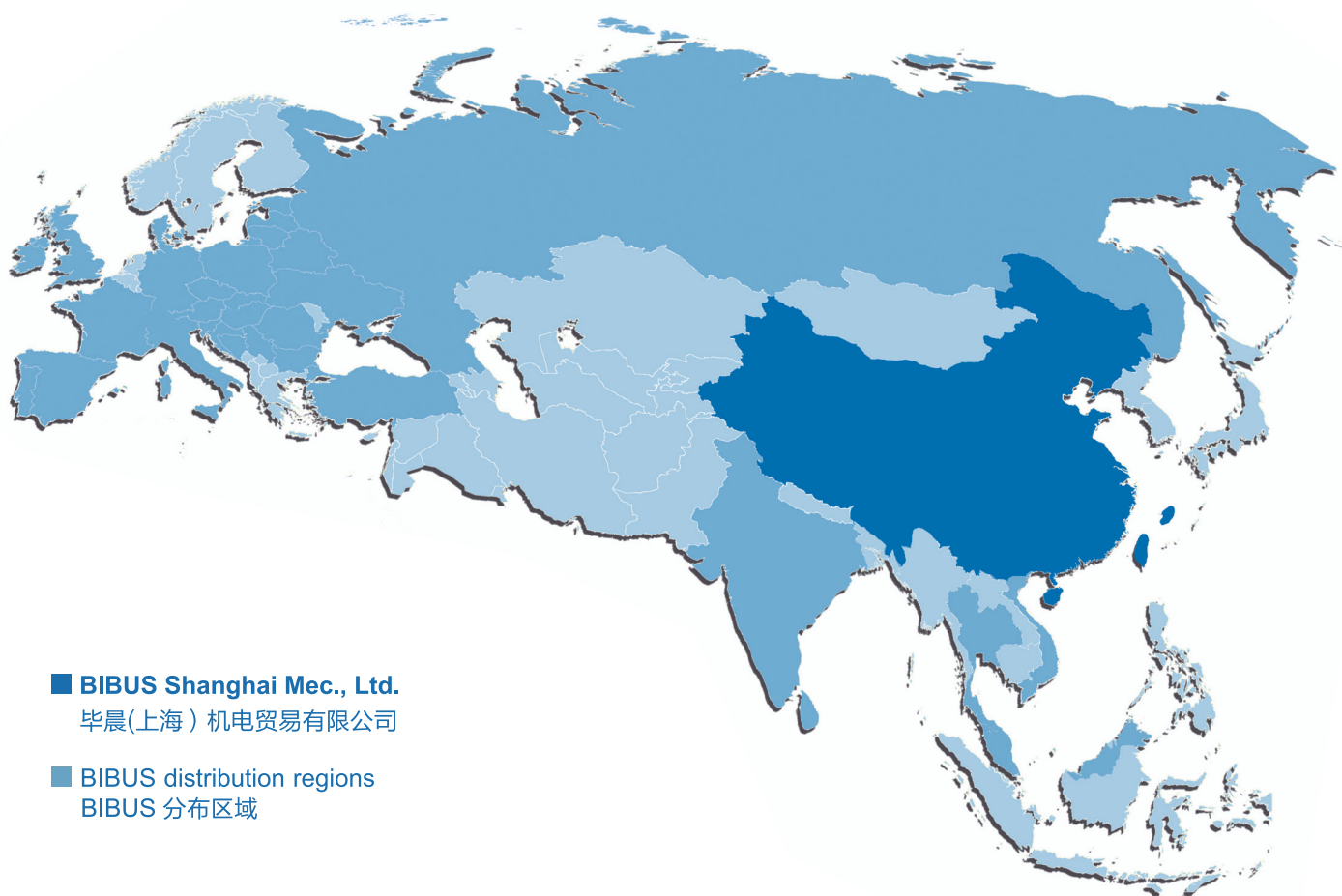
意大利 FPZ 高温鼓风机专为苛刻工业环境设计，采用特种耐热材料与独特冷却技术，可在持续高温下稳定运行。其结构坚固，效率卓越，广泛应用于烘干设备、工业炉窑废气处理及热风循环系统，确保流程高效可靠，是处理高温介质的顶级解决方案。



ENGINEERING | 工程

LOGISTICS | 物流

SERVICES | 服务



■ **BIBUS Shanghai Mec., Ltd.**

毕晨(上海)机电贸易有限公司

■ **BIBUS distribution regions**

BIBUS 分布区域

BIBUS Shanghai Mec., Ltd.

2nd floor, Block 9, No.188 Shanfeng Road,
Shanyang Town, Jinshan District 201508
Shanghai, P.R.China

Tel +86 21 5803 9270

Fax +86 21 6729 8667

info@bibuschina.cn

www.bibuschina.com

毕晨(上海)机电贸易有限公司

中国上海市金山区山阳镇

山丰路 188 号 9 幢 2 层 201508

电话 +86 21 5803 9270

传真 +86 21 6729 8667

info@bibuschina.cn

www.bibuschina.com