



SYSTEMS | 系统集成

PRODUCTION | 产品制造

MECHATRONICS | 机电一体化

FLUID TECHNOLOGY | 流体技术

Supporting your success

BIBUS Shanghai Mec., Ltd. focuses on development, production, sales, distribution and technical support of mechatronical components and other specials in fluid technology.


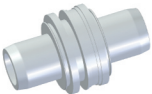

In our own workshop, we manufacture production parts, systems and labour intensive assemblies for the Chinese and European markets.

支持您的成功

毕晨（上海）机电贸易有限公司致力于机电产品和流体科技方面的研发、生产、销售、分销和技术支持。

我们的生产车间为中国和欧洲市场制造机电零部件、系统集成和组件装配。

Our Products and Brands | 我们的产品和品牌

BIBUS Holding BIBUS 控股		4	Expansion shafts 涨紧轴		15
Technology Group 科技集团		6	High speed valves 高速阀		16
System & Production 系统&产品		8	Air Motors 气动马达		17
Electric Wheels 电动轮		10	Air Motors 气动马达		18
Linear Motion 直线运动		11	Linear Motion 气动全系列产品		19
Power Transmission 动力传动		12	Pipe fittings 管接头		20
Damping Technology 阻尼技术		13	Pneumatic fittings 气管接头		21
Safety Chucks 安全卡盘		14	Diaphragm pumps 隔膜泵		22

Our core competences

Our core competences are engineering, logistics and services. Additionally we have experiences in assembling and production from the prototype to series products as well as in the development and assembly of complete systems for stationary and mobile applications. State-of-the-art machine tools make us to an independent partner to deliver just in time.

我们的核心竞争力

我们的核心竞争力是工程，物流及服务。此外，我们在固定式和移动式的产品研发和装配方面也深具优势。水准一流的进口机床，使我们得以及时供货，成为可依赖的合作伙伴。



The customer-centered in-house sales support and a wide stock guarantees fast order processing. We are ideally equipped for development and production as well as for packaging of special components.

以顾客为中心的內部銷售支持，以及寬敞有序的庫存倉儲，保證訂單的快速處理。我們非常擅長於特殊產品的開發，生產和打包定制服務。

Network of expertise – partners for technology, materials and electronics

We are a leading company in our core business areas and provide our customers with high quality products and services.

BIBUS is a family owned Swiss company founded in 1947. Today, BIBUS operates in over 32 countries with more than 1000 employees in Europe and Asia.

The key to our success is the network of expertise and skills of our employees.

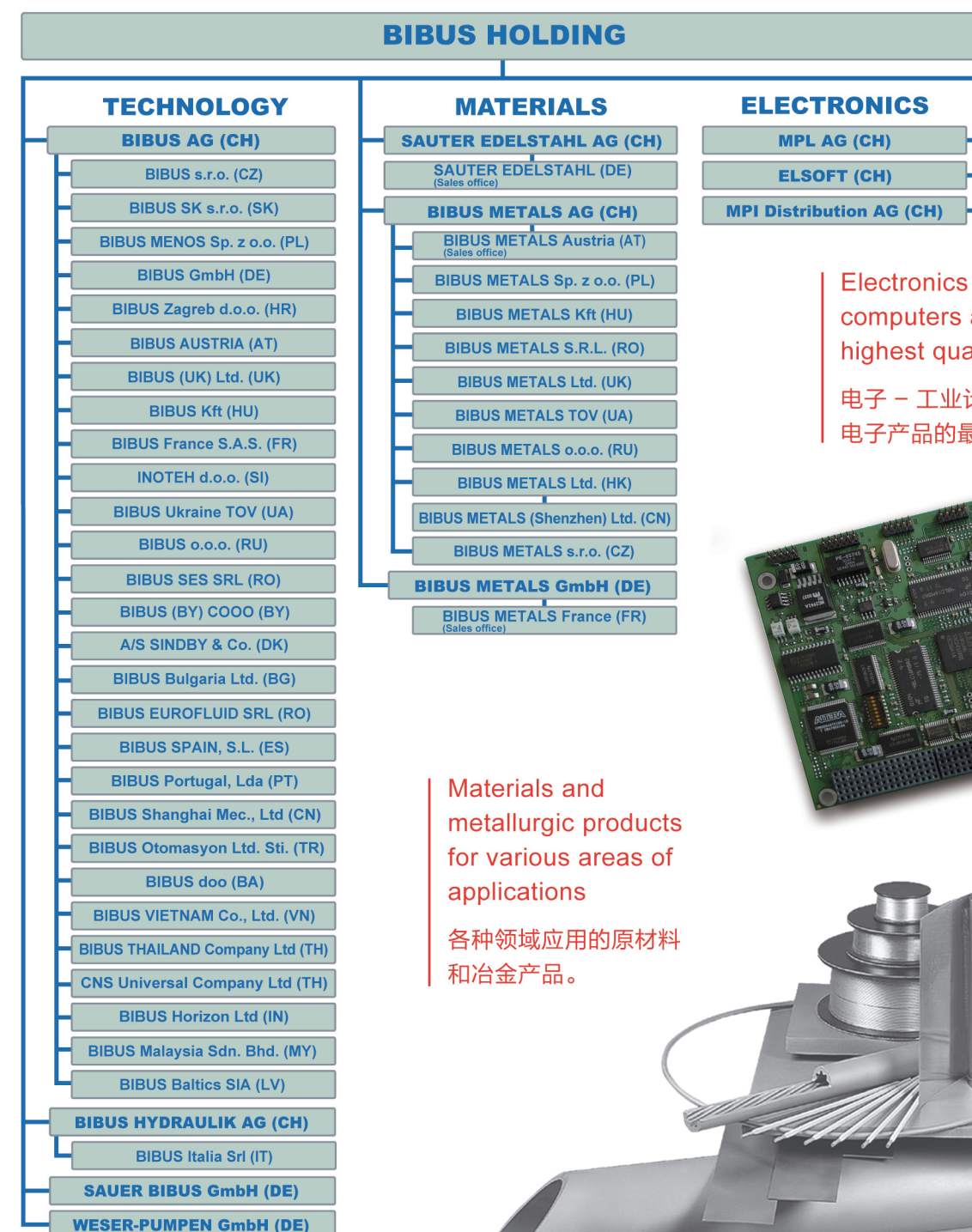
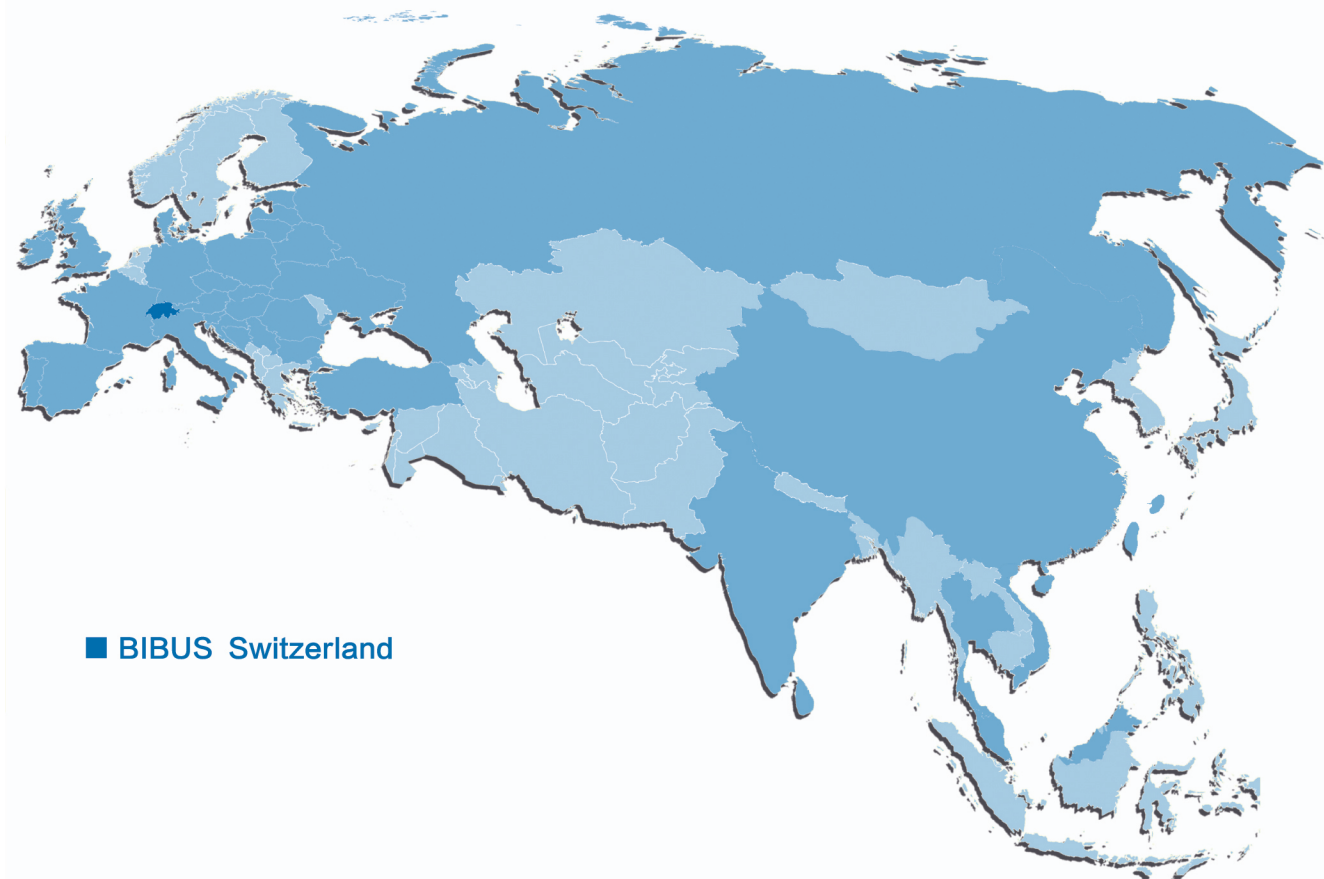
技术、原材料、电子业务的专业网络化合作者

专业技能网络化——技术、原材料与电子业务的合作伙伴

我们是核心业务领域的龙头企业，为我们的客户提供高品质的产品和服务。

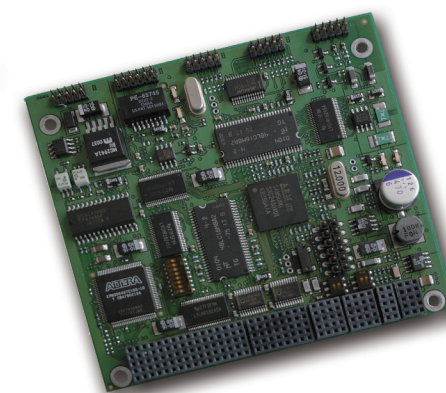
BIBUS是一家企业，于1947年创立于瑞士，业务遍及超过32个国家，拥有超过1000位雇员。

我们成功的关键是雇员的专业与技能网络化。



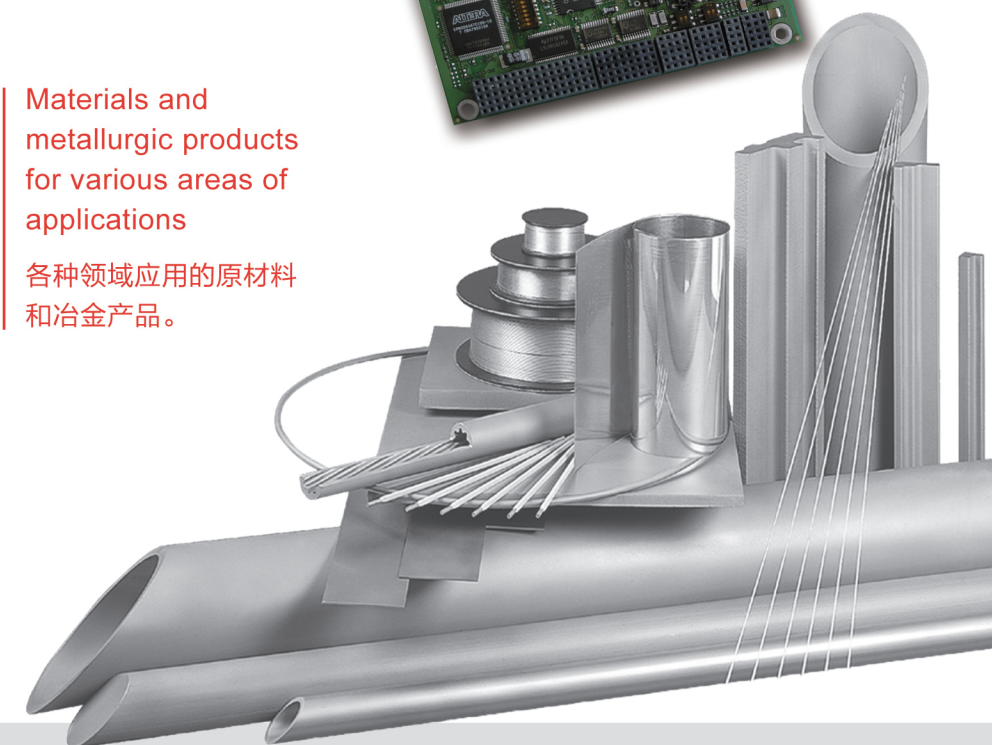
Electronics - Industrial computers and electronics for highest quality requirements

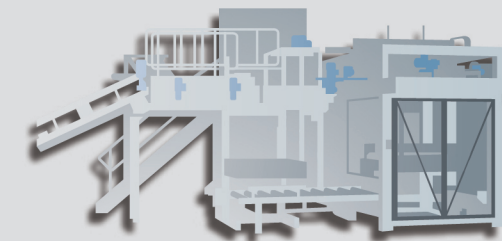
电子 - 工业计算机与电子产品的最高品质要求



Materials and metallurgic products for various areas of applications

各种领域应用的原材料和冶金产品。





Engineering - Logistics - Services

70 years of experience in the fields of hydraulics, pneumatics, environmental technologies, motion technologies, mechanical components and systems.

Core competencies in the development and manufacture of assemblies, hydraulic systems and units as well as in the development and packaging of special components.



工程——物流——服务

我们在液压，气动，环保技术，运动技术，机电部件和系统集成领域有70年的经验积累。

我们在技术研发、装配制造、液压系统和元器件供应以及打包定制方面均深具核心竞争力。

Mechatronics

A complete line of mechatronic components, incl. controllers, drives, motors, sensors, clutches, breaks, gears and linear actuators. Our range is further completed with industrial gas springs, switch technology, safety engineering and aluminium profile systems.

Pneumatics

An extensive pneumatic product line to meet applications in every sector of the market. From semiconductor to automotive, medical to textile, our products are designed to fit your unique requirements.

Hydraulics

Hydraulics by BIBUS offers an extensive hydraulic and electro-hydraulic product line, engineered to meet applications as well in the mobile as in the industrial sector. Our local subsidiaries, European wide, assure you best engineering expertise and most rapid deliveries.

Environmental Technology

With our environmental technology we market a comprehensive range of air pumps, diaphragm blowers, side channel blowers, air diffusers, submersible pumps and double diaphragm pumps.



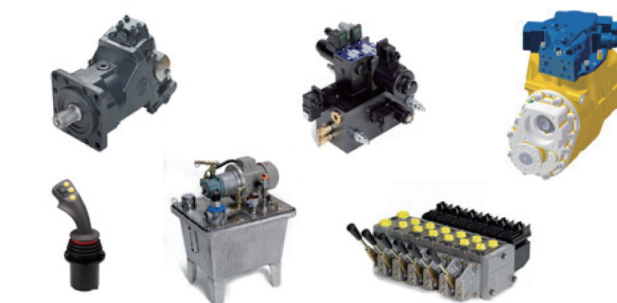
机电一体化

机电一体化组件的完整产品线包括：控制器，驱动器，电机，传感器，离合器，联轴器，齿轮和线性驱动器。我们还拥有工业用气弹簧，开关技术，安全工程和铝型材系统等极为丰富的产品线。



气动系列

我们丰富的气动产品系列，全方位满足市场需求。从半导体到自动化，医疗到纺织，我们的产品设计，完全满足您的个性要求。



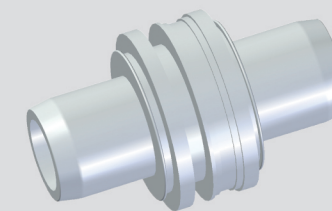
液压系列

BIBUS 的液压部门提供通用液压和电动液压产品，满足汽车与工业领域的应用需求。我们遍及欧洲的子公司，确保为您提供最优秀的工程专业技术与最快捷的当地交付服务。



环保技术

基于我们的环保技术，我们的气动泵、隔膜泵、鼓风机、侧槽风机、空气扩散器、潜水泵、双隔膜泵产品在市场上得到广泛应用。



Systems and assemblies

From the prototype to series production - as well as in the development and assembly of easy assemblies and complete systems for stationary and mobile applications. We provide the right solutions and overtake planning, design, commissioning, assembly and testing.

系统和组件

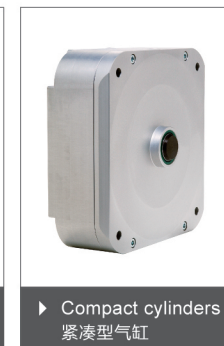
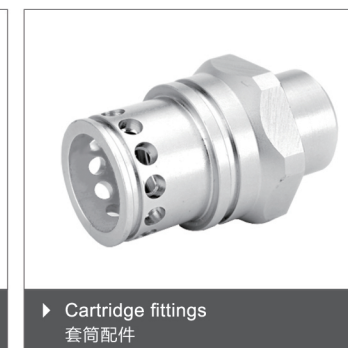
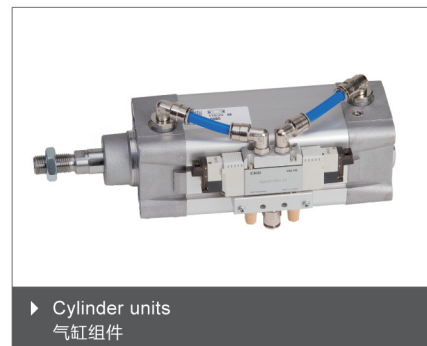
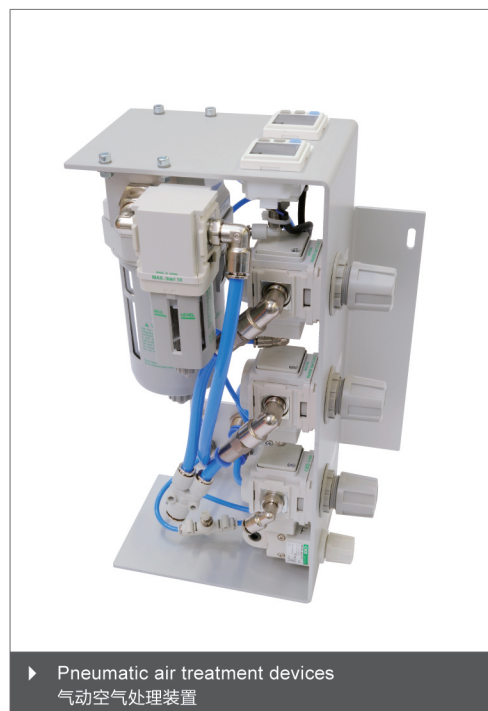
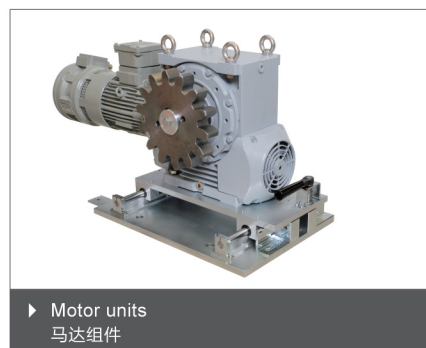
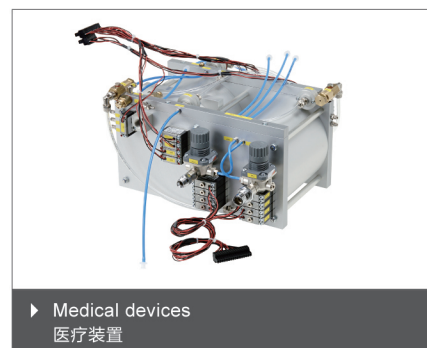
从样品到批量生产，以及从固定式和移动式的一般组件到完整系统的研发和装配方面，我们提供正确的解决方案，并包含计划、设计、组装和测试。

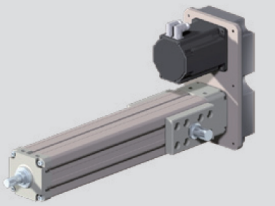
Own Production

In 2013 we started with our own production in Shanghai. In our modern machinery plant we produce special pneumatic cylinders, customized products for fluid technology and mechatronic applications and key parts for our systems and assemblies.

自主产品

2013年，我们在上海开始了自主化生产。在我们现代化的机械工厂，我们生产特种气缸、定制流体技术与机电一体化应用产品以及集成系统和组件装配所需核心零部件。





Electric wheel integrating motor and batteries

The technology proposed by EZ-Wheel is the fastest, simplest and most advanced solution offering electric traction to mobile materials in all industries, including but not limited to medical environment, food industry, and heavy load handling.

集成马达和电池的电动轮

EZ-Wheel电动轮为所有工业需求的电动运输领域提供最快捷、简单、先进的解决方案。包括但不限于医药应用，食品工业和重载处理领域。



Linear motion technology

Thomson is the best positioned to provide the optimal linear motion solution for your application. The range covers the smallest and most compact linear motion systems to the biggest and most robust. Our wide range of guide and drive systems can be configured economically and can also work in harsh environments, at high speeds, and in high precision applications.

直线运动技术

Thomson是您在直线运动应用方面的最佳解决方案。其应用范围广泛，覆盖从微小规格到大型重载的直线运动系统。我们丰富的驱动方案，能够满足客户的经济配置，并且能够适应恶劣工作环境与高速、高精度的应用要求。



► Series 300 for indoor
室内用300系列产品



► Series 160 in compact applications
紧凑型160系列



► Electric wheel
电动轮



► Series 10" for outdoor
室外用10"系列



► Accessoires
附件



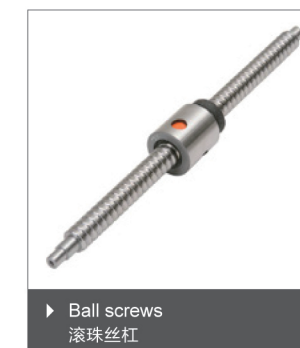
► Linear actuators
电动执行器



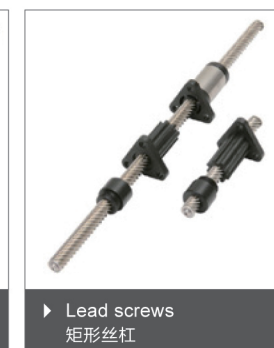
► Linear units
直线运动单元



► Lifting columns
升降柱



► Ball screws
滚珠丝杠



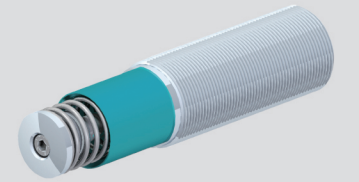
► Lead screws
矩形丝杠



► Linear bearings and guides
圆轨和方轨



► Planetary gear heads
行星减速机



Every aspect of power transmission

The brand RINGFEDER is world's leading in the sector of locking devices and damping technology. The GERWAH brand stands for torsionally rigid, elastic couplings as well as safety couplings in the lower torque range.

动力传动技术

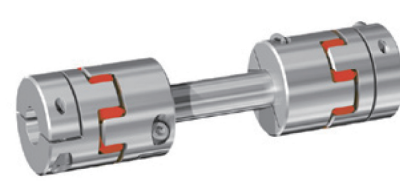
RINGFEDER品牌是世界上涨紧锁定装置和减震技术领域的佼佼者。GERWAH品牌的定位是钢膜片连接，弹性连接以及低扭矩安全联轴器的应用。而TSCHAN则在高速重载恶劣工况条件下，具有独特优势。



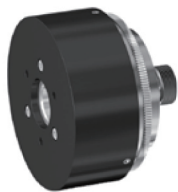
► Metal bellows couplings
金属波纹管联轴器



► Elastomer couplings
梅花型弹性联轴器



► Line shafts
线型联轴器



► Magnetic couplings
磁性联轴器



► Friction springs
摩擦弹簧



► Special couplings
特殊联轴器



► Locking assembly
涨紧套

Specialist for damping technology

ACE is the leading specialist in the area of industrial damping technology. Well known in the linear deceleration market with industrial shock absorbers but also for many other complementary products developed which assist in absorbing shock, controlling speeds, or even lifting loads.

减震技术专家

ACE是工业减震技术领域的领导者。其以工业油压减震器享誉直线减速市场，而其独特的吸收减震、控制速度以及提升负载的各类产品亦性能卓越。



► Industrial shock absorbers
工业油压吸震器



► Safety shock absorbers
安全型吸震器



► Industrial gas springs
工业气弹簧



► Stainless steel gas springs
不锈钢气弹簧



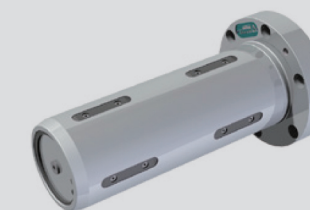
► Rotary dampers
旋转阻尼器



► Profile dampers
筒易阻尼器



► Damping plates
吸震垫



Safety chucks

BOSCHERT safety chucks provide security by winding and unwinding applications. For each application BOSCHERT safety chucks represent an extremely economical and easy solution for the clamping of expansion shafts.

安全卡盘

BOSCHERT安全卡盘提供收卷和放卷的安全应用，易于实现快速、简便的涨紧轴装卸操作。

Expansion units

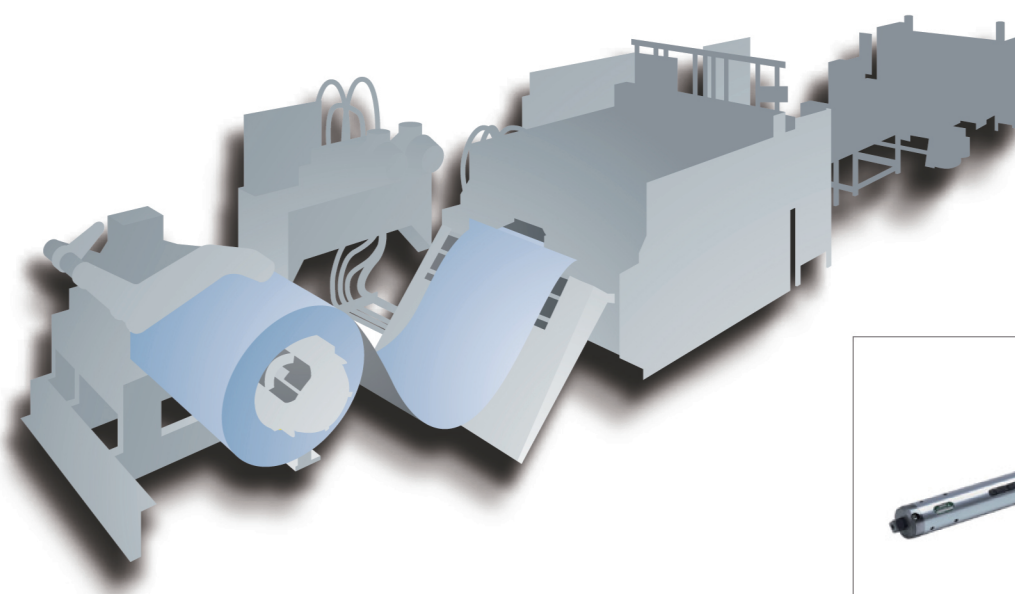
From the smallest to the largest installations. The expansions units from Vorwald covers all areas of winding technology.

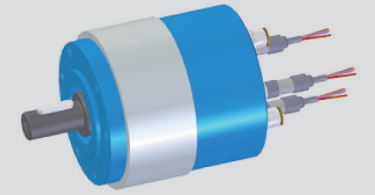
Each product reflects the quality and experience of the manufacturing company behind it.

涨紧装置

从小规格小尺寸到大规格大尺寸的安装。Vorwald涨紧装置涵盖卷绕技术的各领域。

每一款产品都体现了德国公司的产品质量与制造经验。





High speed in pneumatics

In the application and development of pneumatic techniques, Matrix products represent the most advanced and the most innovative choice. Solenoid valves, vacuum solenoid valves, pressure regulators, electronic controllers as well as special products.

高速阀

在气动技术的应用与发展领域，Matrix产品代表最先进、最具革新理念的选择。从电磁阀、真空电磁阀、压力调节阀、电子控制器到特殊产品。

Special pneumatic motors

PTM radial piston motors are perfect for high torque low speed applications. The motors are easy to control and energy saving.

The air operated stepper motor from Baumgartner is a unique drive with a maximum of precision.

特殊气动马达

PTM 径向柱塞气动马达是高扭矩、低转速应用的完美选择。该马达易于控制且经济节能。

Baumgartner 气动步进马达，兼具独特驱动与高精度度。

MATRIX



► Miniature valves
迷你阀



► Single valves
单阀



► Multi valve
组合阀



► Valve with base plate
带基板阀



► Valve manifold
阀岛



► Customized solutions
客户解决方案



► Sorting valve manifold
色选阀岛



► Electronic regulator
电子调压阀



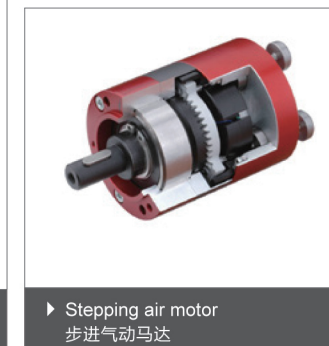
► Radial piston air motors
径向柱塞气动马达



► Radial piston air motor
径向柱塞气动马达



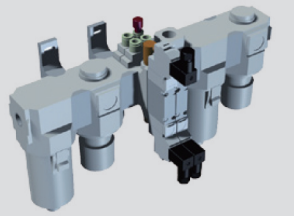
► Stepping air motor with spindle
带主轴步进气动马达



► Stepping air motor
步进气动马达



► Stepping air motor with valve unit
带阀块单元步进气动马达



Pneumatic rotary actuators

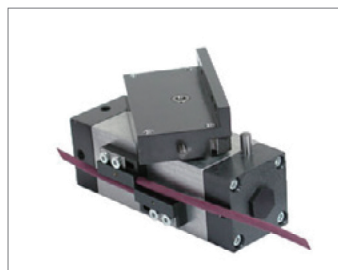
PTM equipment consists mainly of pneumatically driven rotary actuators and tilting modules, gripping modules, tilting-gripping modules, linear units and special plant for handling and automation. A particular characteristic of P. T. M. products is their small, light construction relative to their high output and long life.

气动旋转执行器

PTM主要包括气动旋转装置和倾斜模块、夹爪模块、倾斜夹爪组合模块和线性单元和手动及自动化特种装置。PTM兼具小巧轻便的结构与高输出、耐久性的优势。



► Rotary actuator
旋转式执行器



► Rotary actuator with mounting plate
带安装板旋转执行器



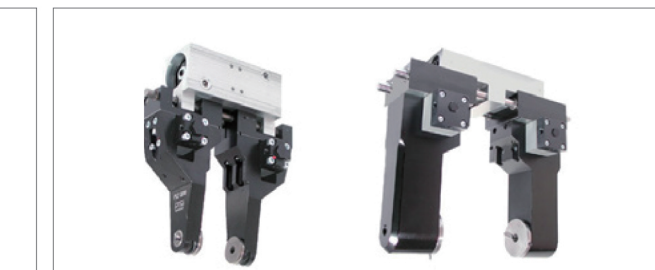
► Rotary actuator with 3 positions
3方位输出轴执行器



► Hydro pneumatic rotary actuator
液压气动旋转执行器



► Parallel gripper
平行气爪



► Special grippers
特殊气爪



► Rotary actuator combination
组合旋转执行器

Inspiring pneumatic technology

CKD offer a vast number of products to users in every industry. The pneumatic product range includes electropneumatic regulators and solenoid valves, pneumatic control components, driving control valves and cylinders.

令人鼓舞的气动技术

CKD为各个行业的用户提供丰富的产品系列。气动产品包括电动—气动调整机构和电磁阀、气动控制元件及不同系列的气缸。



► Pneumatic actuators
气动执行器



► Valves
阀



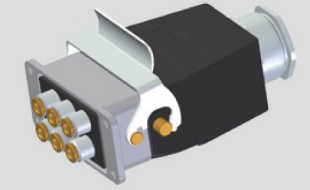
► Sensors and regulators
传感器和调节阀



► Air treatment
空气处理系列



► Air treatment specialties
空气处理特殊产品



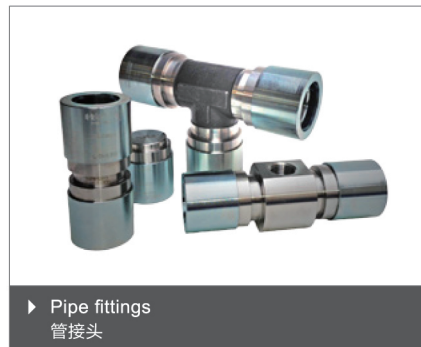
Pipe fittings up to 1140 bar !

HAELOK Swiss Precision, the inventor of one of the world's strongest mechanical pipe connection and considered as the only mechanical alternative to welding. Average time to install a fitting is less than 1 minute even by unskilled workers.

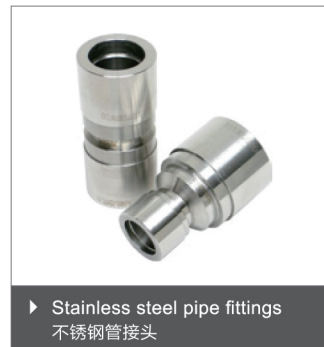
耐压高达1140 bar 的管接头!

HAELOK瑞士精密技术，作为世界上最牢固管道连接件开创者之一，其管接头被公认为唯一的机械替代焊接之选。非专业人员安装一个接头的平均时间不超过1分钟。

HAELOK®
SWISS PRECISION



► Pipe fittings
管接头



► Stainless steel pipe fittings
不锈钢管接头



► Assembly tool
装配工具



The right attitude to fittings!

C.matic offers a very wide range of fittings covering every possible requirement.

Different fitting lines ranging from push in connect brass nickel-plated, acetal, stainless steel 316 fittings, to push in connect fittings for grease installations and one touch fittings, function fittings, valves, flow controls and quick couplers.

最佳接头之选!

C.matic提供丰富的接头产品系列，完美满足各类市场需求。

其接头系列材质包括黄铜镀镍、乙缩醛、SUS316等快插式接头、油路连接件，即插即用式接头、功能性接头、流量控制快速接头。

C.matic®
PNEUMATIC FITTINGS



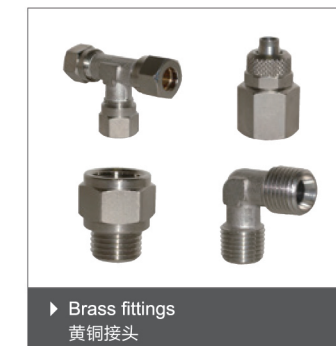
► Push-in brass fittings
黄铜快速接头



► Push-in plastic fittings
塑料快速接头



► Function fittings
功能型接头



► Brass fittings
黄铜接头



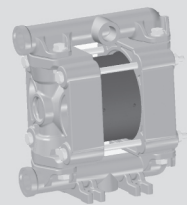
► Stainless steel fittings
不锈钢接头



► High pressure fittings
高压接头



► Quick couplings
快速接头



Double diaphragm pumps

Fluimac offers a wide range of air operated double diaphragm pumps and automatic pulsation dampers. The pumps are available in different materials like PP, PVDF, SUS316 and Aluminium. 11 sizes from 1/4" up to 3" perform flow rates up to 1000 Liters per minute.

双隔膜泵

Fluimac提供多种气动双隔膜泵和自动脉冲阻尼器。泵产品的各种可选材质，包括PP、聚偏二氟乙烯、SUS316和铝合金。各类可选尺寸，从1/4"到3"，额定流量高达1000升每分钟。



► Series P7-8 L/min
P7-8L/min 系列



► Series P50-50 L/min
P50-50L/min 系列



► Series P100-100 L/min
P100-100L/min 系列



► Series P160-160 L/min
P160-160L/min 系列



► Series P1000-1000 L/min
P1000-1000L/min 系列



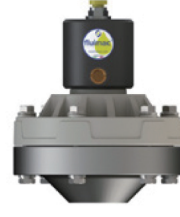
► Food process pumps
食品级泵



► ATEX pumps
防爆泵

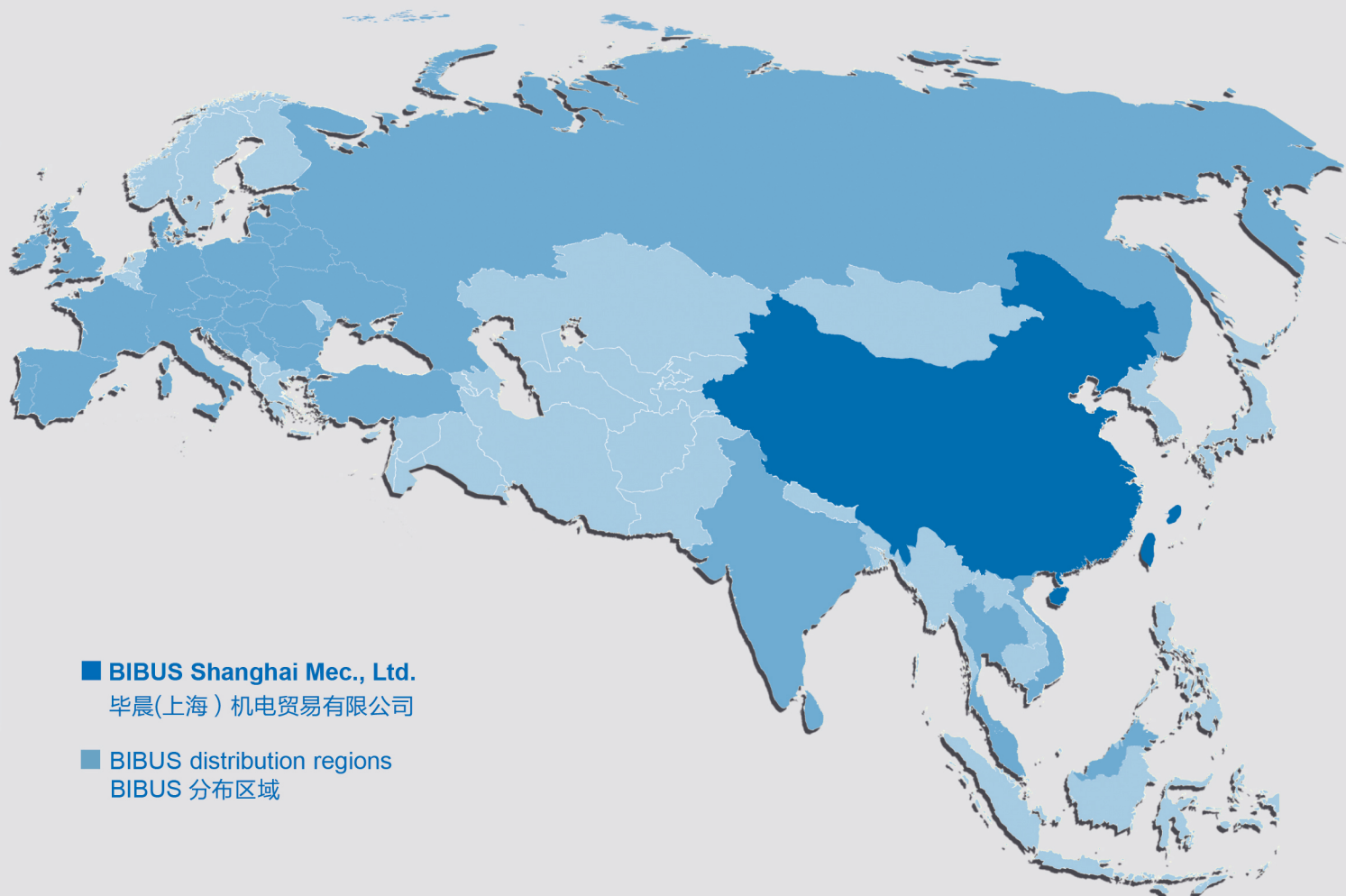


► 3:1 high pressure pumps
高压泵



► Pulsation damper
脉冲阻尼器

ENGINEERING | 工程
LOGISTICS | 物流
SERVICES | 服务



■ **BIBUS Shanghai Mec., Ltd.**

毕晨(上海)机电贸易有限公司

■ **BIBUS distribution regions**

BIBUS 分布区域

BIBUS Shanghai Mec., Ltd.
2nd floor, Block 9 No.188 Shanfeng
Road, Shanyang Town, Jinshan
district 201508 Shanghai,P.R.China

Tel +86 21 5803 9270
Fax +86 21 6729 8667
info@bibuschina.cn
www.bibuschina.com

毕晨(上海)机电贸易有限公司
中国上海市金山区山阳镇
山丰路188号9幢2层 201508

电话 +86 21 5803 9270
传真 +86 21 6729 8667
info@bibuschina.cn
www.bibuschina.com