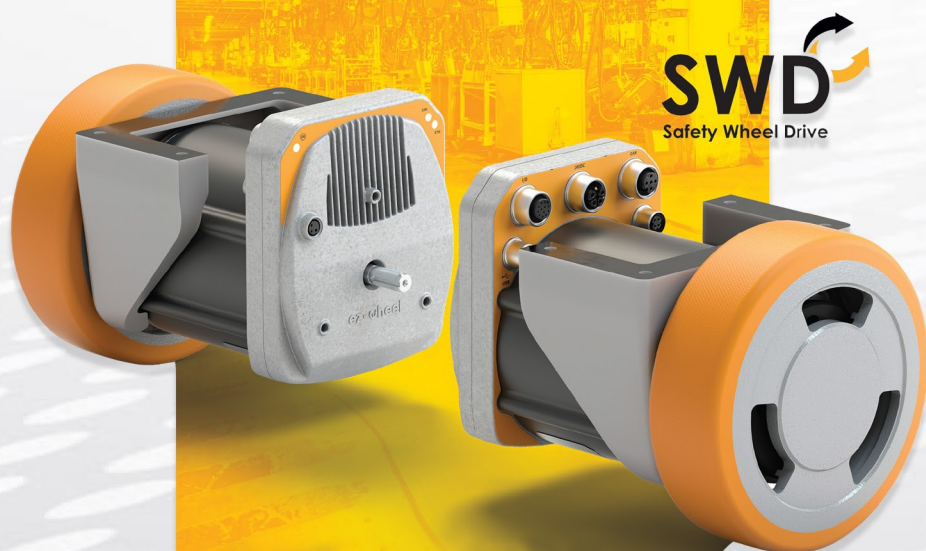


easier & safer

SAFETY_{ON} BOARD



SYSTEM SOLUTIONS

MECHATRONICS AND PROCESS TECHNOLOGY

DAMPING TECHNOLOGY

LINEAR AND ROTATION TECHNOLOGY

DRIVE TECHNOLOGY

ELECTRICAL ENGINEERING

Your One-Stop Shop for Engineering and Industrial Solutions

About Us:

BIBUS (UK) Ltd is responsible for the sales, distribution and technical support of Secoh Sangyo linear diaphragm blowers, FPZ side channel blowers, Bansbach easylift gas springs, Jager diffusers, CKD, EZ Wheel & Sang-A pneumatics, fittings and accessories.

BIBUS (UK) Ltd enjoys the full support and backing of BIBUS HOLDING AG, who in its capacity as a technical trading company, has over 60 years of experience in the field of pneumatics, mechatronics, envirotech and hydraulics. With the BIBUS group now consisting of over 30 subsidiaries throughout Europe and Asia, we have the ability to provide many diverse industries with a complete engineering solution for all their application needs.

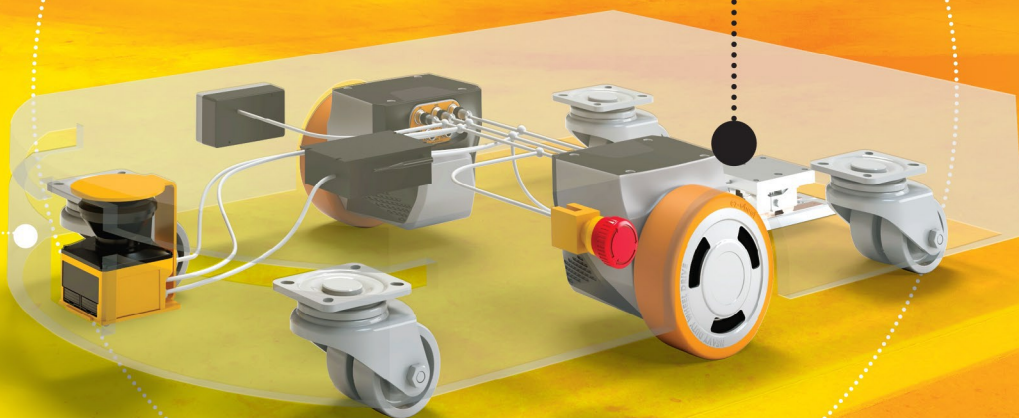
Our goal at BIBUS (UK) Ltd is to supply our customers with superior quality products at affordable prices, delivered on time and backed up with consistent after sales service and technical support they can rely upon.

We are an ISO 9001:2015 accredited company.



THE SIMPLEST MOBILE ROBOT SET-UP EVER

SWD® technology disrupts AGVs and AMRs
architecture thanks to its unique level of integration



COST REDUCTION

- Up to 50% less components
- Simpler and faster assembly



TIME SAVING

- Shorter engineering time
- Simplified certification process



FIRST-CLASS SAFETY

- Suitable for collaborative robots
- ISO 3691-4 compliance



MODULAR ARCHITECTURE

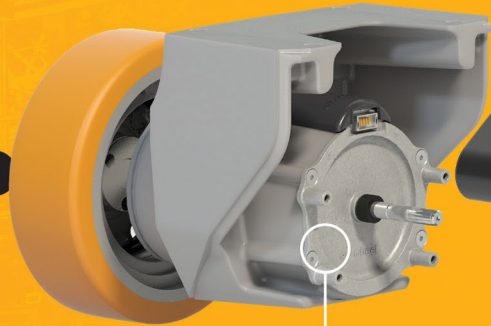
- Freedom of integration
- Flexible and scalable

Rechargeable battery
Li-ion 24V high power



Autonomy and ease
of integration

Safe motor control and
safety encoder integrated



Heavy-duty
cast iron frame



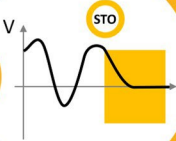
700 kg of vertical load
1 500 kg of load moved



Interfaces
CANopen
safety

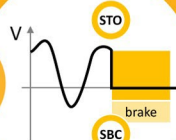
4 programmable safety inputs
2 STO inputs

STO



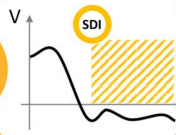
Safe motor disconnection
when a stop is requested
STO up to SIL3/PLe

SBC



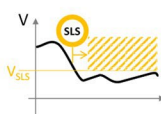
Safe brake control
to ensure a lockout
SBC or SBU (unlock) up to SIL2/PLd

SDI



Safe direction control
in case of collision risk
SDI up to SIL2/PLd

SLS



Safely limited speed
to prevent hazardous situations
SLS (8 levels) or SLSa (asymmetric)
up to SIL2/PLd

SMS



Safe maximum speed
to secure operating range
SMS up to SIL2/PLd





SAFETY WHEEL DRIVES
NAVIGATION PC
SAFETY LASER SCANNER
E-STOPS



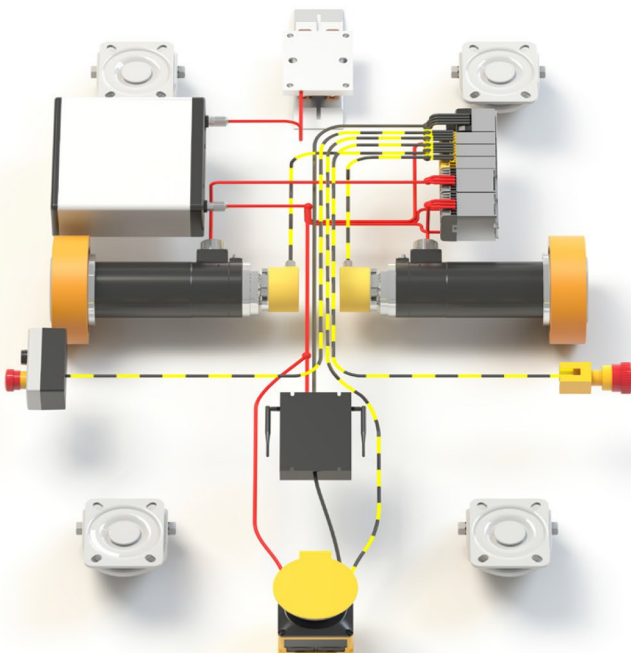
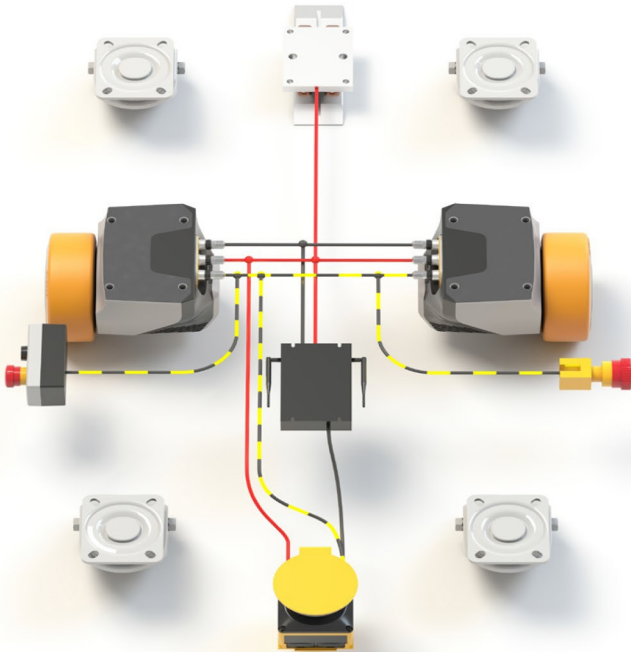
CONVENTIONAL SOLUTION

WHEELS
GEARBOXES
MOTORS
SAFETY ENCODERS

PLC
SAFETY PLC
RELAYS
MOTOR DRIVERS

BATTERY
CIRCUIT BRAKERS

NAVIGATION PC
SAFETY LASER SCANNER
E-STOPS





INDUSTRY



AUTOMOTIVE



LOGISTICS / RETAIL



FOOD PROCESSING



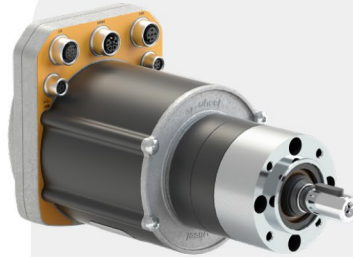
PHARMA / CHEMISTRY



MEDICAL

UNIQUE TECHNOLOGICAL BRICK FOR ALL INTRALOGISTICS NEEDS

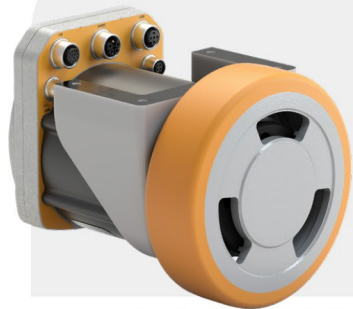
Drives and Wheel Drives with integrated safety



SWD® Core Gear motor

Peak torque	37 Nm
Nominal power	185 W
Speed range	0 to 130 rpm

Values given for reference ezSWDcore.14/C



SWD® 125 Medium duty wheel drive

Diameter	125 mm
Peak pushing effort	20 daN 500 kg moved
Max vertical load	250 kg
Speed range	0 to 11 km/h

Values given for reference ezSWD125IM.4/C

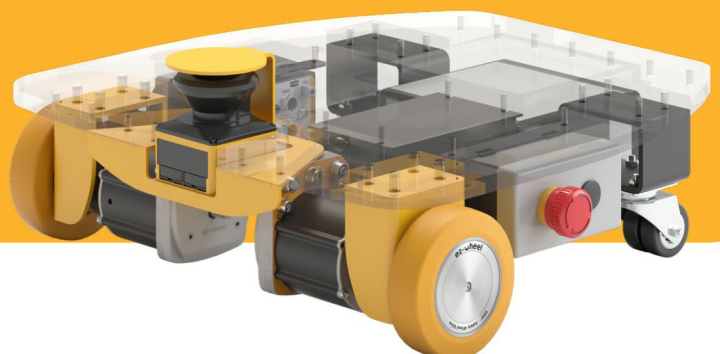


SWD® 150 Heavy duty wheel drive

Diameter	150 mm
Peak pushing effort	60 daN 1 500 kg moved
Max vertical load	700 kg
Speed range	0 to 3.7 km/h

Values given for reference ezSWD150IH.14/C-x

Discover datasheets, manuals, product options, software support and our pre-packaged kits to accelerate the development of your mobile robot and much more!



Technology

Materials

Electronics

- BIBUS AG (CH)
- BIBUS s.r.o (CZ)
- BIBUS SK s.r.o. (SK)
- BIBUS MENOS Sp. z.o.o. (PL)
- BIBUS GmbH (DE)
- BIBUS Zagreb d.o.o. (HR)
- BIBUS Austria GmbH (AT)
- BIBUS (UK) Ltd (UK)
- BIBUS Kft. (HU)
- BIBUS France S.A.S (FR)
- INOTECH d.o.o (SI)
- BIBUS Ukraine LLC (UA)
- BIBUS SES SRL (RO)
- BIBUS SINDBY A/S (DK)
- BIBUS Bulgaria Ltd. (BG)
- BIBUS Spain S.L. (ES)
- BIBUS Portugal, Lda (PT)
- BIBUS Shanghai Mec., Ltd. (CN)
- BIBUS Endüstriyel Ürünleri A.Ş (TR)
- BIBUS Hidrotos Hidrolik A.Ş. (TR)
- BIBUS doo (BA)
- BIBUS Vietnam E&C Co., Ltd. (VN)
- BIBUS (Thailand) Co. Ltd. (TH)
- BIBUS India Pvt. Ltd. (IN)
- BIBUS Malaysia Sdn. Bhd. (MY)
- BIBUS Baltics SIA (LV)
- BIBUS Romicon B.V. (NL)

BIBUS HYDRAULIK AG (CH)
BIBUS Italia Srl (IT)

SAUER BIBUS GmbH (DE)

WESER-PUMPEN GmbH (DE)

SAUTER EDELSTAHL AG (CH)

SAUTER METALL GmbH (DE)

- BIBUS METALS AG (CH)**
- BIBUS METALS Austria (AT)**
Sales Office
- BIBUS METALS ASEAN (VN/KR)**
Sales Office
- BIBUS Metals Sp. z.o.o. (PL)**
- BIBUS Metals Kft. (HU)**
- BIBUS Metals S.R.L. (RO)**
- BIBUS Metals TOV (UA)**
- BIBUS Metals Ltd. (HK)**
- BIBUS Metals (Shenzhen) Ltd. (CN)**
- BIBUS Metals s.r.o. (CZ)**
- BIBUS Metals ITD. (UK)**

BIBUS METALS GmbH (DE)
BIBUS METALS France (FR)
Sales Office

- S+D METALS GmbH (DE)**
- S+D METALS (FR)**
Sales Office
- S+D METALS (IT)**
Sales Office
- S+D METALS (CZ)**
Sales Office
- S+D Speciality METALS UK Ltd. (UK)**
Sales Office

HARTMANN MATERIALS AG (CH)

MPL AG (CH)

MPI Technologies AG (CH)



BIBUS (UK) Ltd
20-21 Soho Mills, Wooburn Green
HP10 0PF, Bucks

Tel. +44 1628 533300

info@bibus.uk
www.bibus.uk
www.shop.bibus.uk

